

## Cincinnati East, Brown County

### Mt. Orab, Ohio- Industrial Site 416

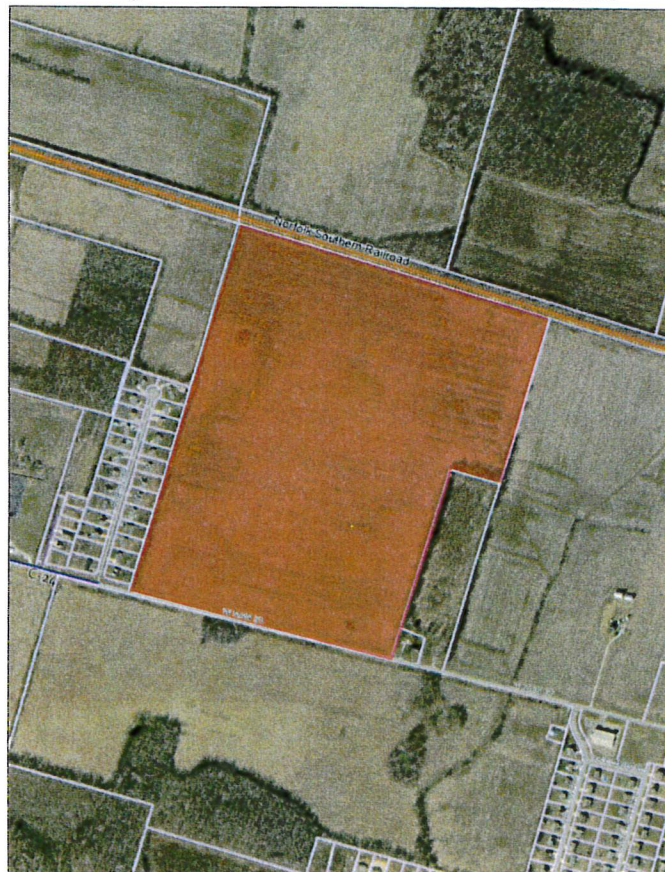
- 111 Acres approximately 40 miles east of Cincinnati
- State Route 32, the limited access 4 lane highway that feeds I-275, I-71, and I-75 is .5 miles from site
- Greater Cincinnati/Northern Kentucky International Airport (CVG) 45 miles from site.
- Phase One Environmental cites no impediments to development.
  - Preliminary studies conducted: Archeological, Wetlands, Endangered Species, Geotechnical
- Rail siding possible- Norfolk Southern rail forms the northern border of the site
- Zoned for heavy industry-no zoning changes or hearings required
- All utilities to site:
  - Electric and gas-Duke Energy
  - Water and sewer-Village of Mt. Orab
  - Fiber – Frontier, Time Warner Cable, S. Bryer Cable
- Brown County is In-Attainment by Ohio EPA for Air Quality
- Brown County population 44,500
- Population within a 40 mile radius of the site is just under 1.8M
- Local, Regional and State Economic Development Incentive programs apply to this site.
- Mt. Orab Port Authority is able to offer many forms of assistance to multiple project types.
- Enterprise Zone 183C & Foreign Trade Zone #46.
- Site Elevation -944-946
- Southern State Community College & University of Cincinnati, Clermont College--Customized Training possible

Contact :

Bruce Lunsford, Mayor  
Village of Mt. Orab  
(937) 444-4141

Kelly Cole, Director  
Brown County Development  
(937) 378-3536  
[kcole@browncountyohio.gov](mailto:kcole@browncountyohio.gov)

**Village of Mt. Orab Tract 416 Industrial Site**



# MOUNT ORAB, OHIO

## GREATER CINCINNATI IS AN ADVANCED MANUFACTURING POWERHOUSE

### GET THE BEST TALENT AT A BETTER COST

- » Total workforce: 1.1 million employees
- » Industry workforce of 140,000 within 50 miles of Cincinnati's city center
- » 200,000 graduates from 300+ colleges and universities within a 200-mile radius of the Greater Cincinnati region
- » Numerous workforce development programs are offered by colleges, universities and organizations

### AUTOMOTIVE

- » 130 companies and 35,000+ industry workers
- » Almost one in nine employees in the Greater Cincinnati region works in an automotive-related job
- » Strategic central access to 80 percent of North American light vehicle production that takes place within 600 miles (1,000 KM), including 58 automotive assembly plants
- » Annual North American trade for motor vehicles, parts and other transportation equipment is \$1,674 billion (*Brookings Institution*)

### AEROSPACE

- » 400+ companies and 180,000 industry workers
- » 50,000 scientists and engineers within a 50-mile radius of the Greater Cincinnati region, including 10,000 at Wright-Patterson Air Force Base in Dayton
- » One of the highest concentrations of aerospace talent in the U.S.
- » One of the top 15 markets in the nation for aerospace products and parts manufacturing
- » Five of the nation's top 50 aerospace and engineering universities are within 200 miles of the region
- » Headquarters of GE Aviation, the world's leading provider of aircraft engines
- » Annual economic impact in Ohio is more than \$8 billion
- » Ohio is the #1 supplier state to Airbus and Boeing

### INDUSTRIAL MACHINERY AND METALWORKING

- » Hundreds of companies and 60,000 skilled workers
- » Major aerospace, automotive, original equipment manufacturers, and component part suppliers, count on our region's unique and innovative production capabilities to turn their visions into realities
- » Headquarters of Fortune 500® AK Steel and the home to the operations of global machinery companies such as, Milacron, Mazak, Makino, and MAG
- » Annual North American trade for machinery, tools and metals is \$1,790 billion (*Brookings Institution*)

### CHEMICALS AND PLASTICS

- » 300 companies and 35,000+ industry workers – 3.5 times the national average
- » 3,000 chemists, chemical engineers, and technical and chemical plant and systems operators
- » Hundreds of scientists, engineers and technical professionals in several Environmental Protection Centers of R&D Excellence
- » Widespread collaboration enables companies to innovate, advance R&D efforts and maximize resources
- » Headquarters of Fortune® 500 Ashland, Inc. and Kao USA, a leading global manufacturer of premium beauty care brands
- » Annual North American trade for chemicals and plastics is \$1,353 billion (*Brookings Institution*)